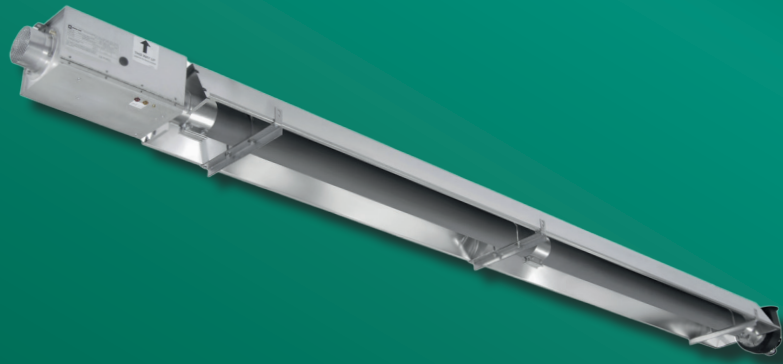
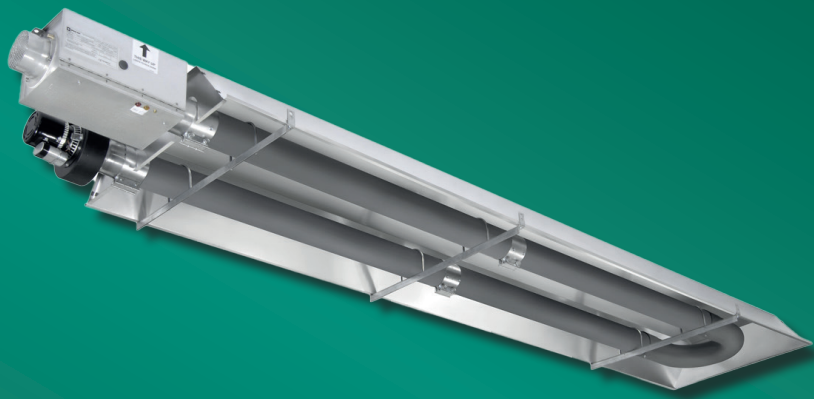




Warmatic



LRU & LRL

Gas Fired Radiant U Tube and Linear Heaters

LRU/LRL Radiant Tube Series

Gas Fired U Tube and Linear Models



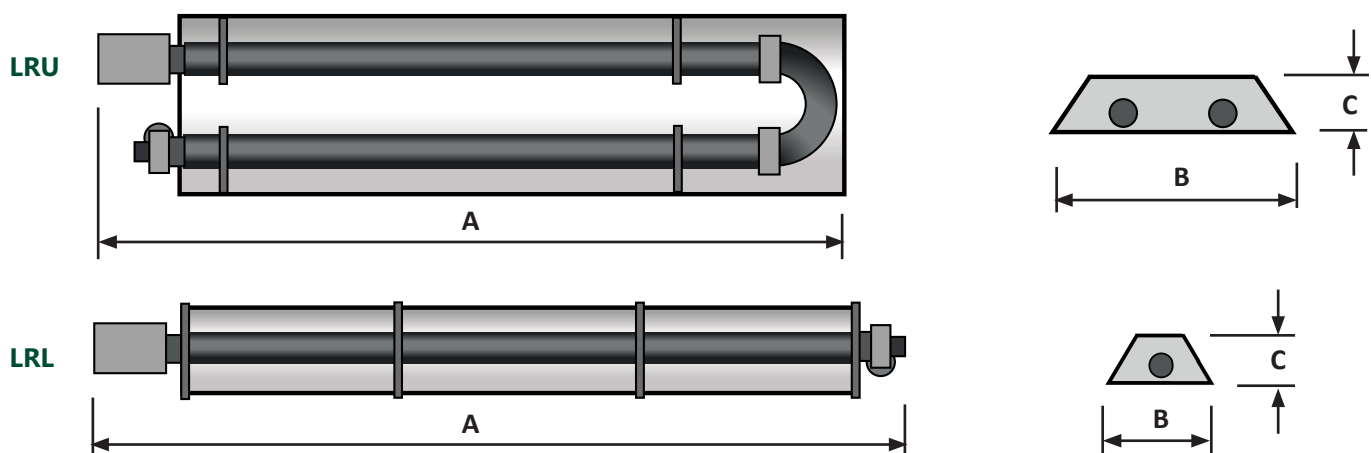
- Six input ratings: 15kW to 47kW available in Linear and 'U' models
- 'Herringbone' link flue systems available with all 'U' and linear models
- Heat treated Aluminised Calorised emitter tube surface - for flake free and cleaner working environment
- Natural Gas and Propane
- Aluminium reflectors - the tested and proven superior material - designed to maximise downward radiant heating effect
- Lightweight construction - tubes supplied in 3m sections - easy to assemble and fit
- CE Approved
- Efficient and cost saving heating method
- Made in the UK under our ISO9001:2008 quality assured system - all units test fired before despatch



SPECIFICATION GUIDE - LRU & LRL Series

		LRU15	LRU25	LRU30	LRU35	LRU40	LRU45	LRL15	LRL25	LRL30	LRL35	LRL40	LRL45
Heat Input	kW Hs	15.0	23.0	29.2	34.5	42.2	47.0	15.0	23.0	29.2	34.5	42.2	47.0
	kW Hi	13.5	20.7	26.3	31.1	38.0	42.3	13.5	20.7	26.3	31.1	38.0	42.3
Seasonal efficiency	ErP %	75.2	75.9	78.2	76.3	75.0	74.1	75.6	77.9	81.0	75.7	78.3	75.3
	BREEAM %	91.4	89.2	89.8	88.1	87.8	86.7	91.4	91.2	92.0	87.9	89.9	86.8
Gas connection	BSP	½"											
Maximum gas consumption	Nat gas G20 (m³/h)	1.43	2.19	2.78	3.29	4.02	4.55	1.43	2.19	2.78	3.29	4.02	4.55
	LPG G30 (m³/h)	0.43	0.66	0.84	0.99	1.21	1.34	0.43	0.66	0.84	0.99	1.21	1.34
Gas inlet pressure	mbar	Natural gas - 20mbar						LPG - 37mbar					
Flue connection	Ømm	127mm or 100mm											
Inlet air connection	Ømm	101mm											
Supply voltage	V	230V 50Hz 1PH N & E Current rating 0.55A External fuse rating - 3A											

Dimensional Data



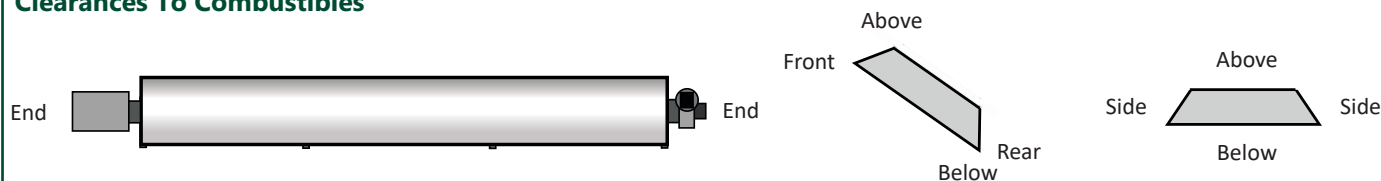
DIMENSIONAL DATA - LRU & LRL Series

Models	LRU15	LRU25	LRU30	LRU35	LRU40	LRU45	LRL15	LRL25	LRL30	LRL35	LRL40	LRL45
Length (A) Standard unit	mm	3100	5385	5510	6970	5493	10065	9955	13000			
Length (A) Extended unit	mm	-	7034	8494	-	-	13003	16048				
Width (B)	mm	460	715	715	340							
Height (C)	mm	175	210	210	180							
Weight	kg	31	47	66-std 78.5-ext	81-std 93.5-ext	27	46	62-std 74.5-ext	79-std 91.5-ext			

RECOMMENDED MOUNTING HEIGHT RANGE (General Guidance only) - LRU & LRL Series

Models	LRU & LRL15	LRU & LRL25	LRU & LRL30	LRU & LRL35	LRU & LRL40	LRU & LRL45	
Horizontal mounting	m	2.4 to 6.0	3.0 to 8.0	3.8 to 10.0	4.0 to 12.5	4.8 to 13.5	5.6 to 15.0
Angled mounting >30°	m	2.1 to 4.5	2.7 to 5.0	3.3 to 7.0	3.7 to 8.0	4.0 to 9.0	4.8 to 11.0

Clearances To Combustibles



MINIMUM CLEARANCES TO COMBUSTIBLE SURFACES - LRU & LRL Series

Models	Side	Above	Below	End	Front	Rear
LRU & LRL15 to 25	510mm	450mm	1220mm	510mm	610mm	305mm
LRU & LRL30 to 45	760mm	610mm	2285mm	610mm	760mm	380mm



About Us

Warmatic Limited are a British manufacturer, offering bespoke efficient climate solutions to the commercial industry, in order to help our client's achieve their desired environmental conditions.

Established in 2020 by two work colleagues that have vast experience within the HVAC and manufacturing industry, our business operates on two main core values;

To build and maintain long-term customer relationships

To fulfill the demands of our client by producing high quality and efficient products

We specialise in the design and manufacture of bespoke air handling and temperature controlled units such as AHU's (heat pump and DX cooling), gas fired modules, gas fired cabinet heaters, direct and indirect gas fired heaters, air rotation units and de-stratification fans. We also offer bespoke designs to replace existing units, with the option of flat pack delivery to assist in areas of restricted access.

Our products are constantly reviewed in order to ensure we operate at the highest engineering standard whilst also considering our environmental impact. Global warming is at the forefront of our designs in order to help reduce the amount of carbon emissions from our products. We achieve this by using condensing gas fired technology and alternative fuel sources such as heat pumps and hydrogen technology.

We are immensely proud of what we produce. Our stringent quality process and attention to detail is what sets us apart from our competitors. Assisted by our dedicated and talented team who use state of the art design technology, Warmatic also offer a high level of technical advice and site support throughout a project to ensure our clients requirements are achieved.

EFFICIENT CLIMATE SOLUTIONS

